



Grounded in Newfoundland for 35 Years

Revised: January 2025

***ISO/IEC 17025**
Accredited Laboratory
www.easternanalytical.ca

Quality Assurance

Eastern Analytical Ltd. has dedicated itself to providing the highest possible quality service to the Mining & Exploration Industry.

Quality Management System & *ISO/IEC 17025 Accreditation

Eastern Analytical Ltd. has implemented a quality system compliant with the International Standards Organization (ISO) requirements for the competence of testing and calibration laboratories. The company regularly participates in the Canmet Round-Robin proficiency test and passes all criteria.

Foreseeing the need for a globally recognized mark of quality; Eastern Analytical Ltd. in February 2014 achieved *ISO/IEC 17025 accreditation (for more details on the scope of accreditation visit the CALA website).

*Eastern Analytical is *ISO/IEC 17025 Accredited in Fire Assay Au, as well as our multi-acid ore grade assays in Cu, Pb, Zn, Ag, Fe and Co.

Quality Control

Samples submitted are analyzed with the strictest quality control: blanks (analytical & method), duplicates and standard reference material (CANMET, CDN, OREAS & GEOSTAT) are inserted into the sequences of client samples. Values of these C.R.M's are available by a link on our website, or on each suppliers website.

About Us

Eastern Analytical opened in 1987 to provide a local assay laboratory to service the exploration industry of Newfoundland & Labrador. We have had many of the same clients since opening our doors over 35 years ago. This is attributed to our dedication to customer service because all work is done onsite by trained local employees. Our commitment to combine fast and accurate results has helped discover many of the mines currently in operation in our province.

Eastern Analytical Ltd. is set on the future with new young leadership determined to expand our business in the province and beyond.



We provide a varied range of sample preparation and assay techniques with modern methods and instrumentation.

Meet Our Team

Job Halfyard	President & CEO	
Heather Elliott	Vice President/CFO	heather@easternanalytical.ca
Brian Wright.....	GM/Director of Operations	brian@easternanalytical.ca
Robert Rideout	GM/Quality Control	robert@easternanalytical.ca
Kelsey Walker.....	Client Services/Data Handling	kelsey@easternanalytical.ca

Eastern Analytical Ltd.
403 Little Bay Road, Box 187
Springdale, NL, A0J 1T0 Canada
(709) 673-3909
info@easternanalytical.ca
accounts@easternanalytical.ca

Submitting Samples

Packing and Identification

Pack samples securely, ensuring that each sample is clearly labelled with a sample number (tags are available). Please identify high grade samples to help avoid cross contamination. We request that all packages/bags are less than 40 lbs for health and safety concerns. Please label shipping packages/bags with sample sequence and identify package with sample submittal form.

Analysis Request

Using an Eastern Analytical sample submittal form or a form of your own, identify:

- Your name or the name of the company the analysis is for
- Please note and specify:
 - *Results to
 - *Invoice to
 - *Additional copies to
- Contact person, with phone number, fax number and email address
- Project name or purchase number if required for invoicing
- Analysis required by element, method or package
- Any special instructions
- Mode of data transmittal (fax or email).
- Storage and disposal of rejects and pulps after analysis

Shipping

Small packages can be couriered or mailed, larger packages can be shipped by DRL Coachlines or your local bus service. Most shipping companies/truck lines deliver to Springdale daily. We also have a pickup service available. Cost: \$0.90 per/km. Please call for more information.

Pricing

Custom bundles and quotes are available on bulk orders to fit your project. Please call Eastern Analytical Ltd. for more information.

Miscellaneous Charges

Reports and Handling Charge	
Base charge (First Sample)	\$7.50
*Add \$0.35 per additional sample, up to a maximum of \$32.00	

Special Handling	
Samples received in plastic bags will be charged for transferring	+\$3.90
Weighing sample and reporting weight	\$2.50
Save soil reject	\$3.05
Special handling, pulp / reject retrieval from storage, per hour	\$60.00

Sample Storage and Disposal	
Storage of pulps after 3 months, per month (per sample)	\$0.20
Storage of rejects after 3 months, per month (per sample)	\$0.30
Return or disposal of pulps and rejects	at cost

Supplies

Item	Quantity	Price
3 part (water proof) assay tags	50/book	\$10.50*
Fibre shipping bags	per bag	\$2.35
Soil bags (kraft paper)	per bag	\$0.90
Soil bags (kraft paper)	per case of 500	\$394.00
Plastic sample bags (6mil) 10x16	per bag	\$0.53
Plastic sample bags (6mil) 10x16	case of 250	\$100.00
Plastic sample bags (6mil) 12x18	per bag	\$0.58
Plastic sample bags (6mil) 12x18	case of 200	\$92.00
Plastic sample bags (6mil) 18x27	box of 200	\$133.00
Plastic Bottles	1 Litre	\$5.25
Acid dripper bottles	125ml	\$5.25
Acid dripper bottles	60ml	\$3.15
Flagging Tape	Per roll	\$3.15

*3 part (water proof) assay tags included with analysis

All prices are subject to applicable taxes and may be shipped at cost via courier, transport or DRL bus (excluding acid). The sample submittal form can be found on page 12, from our website, or by contacting Eastern Analytical Ltd.

Sample Preparation

Soils (Tills, Streams, Lake Sediments, etc.)

Soils and Silts	
Drying at 60°C and sieve up to 250g to -80mesh (up to 1/2 Kg) (Additional material add +\$1.30 per 1/2 Kg)	\$4.75
Drying at 60°C and pulverize up to 250g to -100mesh	\$6.40
Sample preparation only. No analysis at our Lab.	+\$3.90
Excessively wet samples (Plus \$0.85 per extra Kg)	\$3.70

Tills and Streams	
Drying at 60°C and sieve up to 250g to -80mesh (up to 1/2 Kg) (Additional material add +\$1.25 per 1/2 Kg)	\$5.80
Drying at 60°C and pulverize up to 250g to -150mesh	\$7.20

HMCs (Heavy Mineral Concentrates)	
Drying at 60°C and transferring to sample envelope	\$5.80
Drying at 60°C and pulverizing to -100mesh / 250g	+\$4.20

Lake Bottoms / Lake Sediments	
Drying at 60°C and sieve to -80mesh (up to 1/2 Kg) (Additional material add +\$2.15 per 1/2 Kg)	\$6.65



Sample Preparation — Rock and Drill Core

Rock and Drill Core	
Crush up to 3 Kg to 80% -10mesh,split 250g and pulverize to 95% 150mesh	\$11.50
Crush 3 Kg to 6 Kg to 80% -10mesh,split 250g and pulverize to 95% 150mesh	\$13.90
Extra crushing oversize sample (per Kg)	+\$3.00
Pulverize only (per 250g)	\$5.20
Preparation only. No analysis at our Lab. (per sample)	+\$4.10
Sample drying for rock chips & sludge (up to 2kg) (> 2kg -\$1.00 per Kg)	\$4.75

Metallic Sieve Preparation, 150Mesh	
Crush up to 1 Kg to 80% -10mesh,pulverize 1 Kg and sieve 150mesh, saving +150meshfraction and -150meshfraction for metallic analysis	\$29.70
Crush >1 Kg to 80% -10mesh,pulverize and sieve to 150mesh (per 500g)	+\$14.85

For Samples Previously Crushed	
Pulverize up to 1 Kg and sieve 150 mesh, saving +150mesh fraction and -150mesh fraction for metallic analysis	\$27.50
Extra pulverizing and screening @ 150 mesh (per 500g)	+\$12.65

200 Mesh	
Crush up to 1 Kg to 80% -10mesh,pulverize 1 Kg and sieve 200mesh, saving +200meshfraction and -200meshfraction for metallic analysis	\$31.90
Crush >1 Kg to 80% -10mesh,pulverize and sieve to 200mesh (per 500g)	+\$16.50



Fire Assay

Fire assay is a lead-collection/fusion, for refinement of total sub-sample into a silver dore bead. The silver bead is dissolved in an aqua-regia digestion and analysis by atomic absorption (AA).

Analysis	
Au @ 30g AA finish – Lower Detection Limit 5ppb (Note: High sulphide samples are not effectively fused when fire assayed at 30g, therefore the sub-sample size will be reduced to 15g or lower where needed for proper fusion.)	\$20.15
Au, Pt, Pd (30g) ICP finish 3–2500ppb	\$27.00
Au 30g Gravimetric finish	\$27.50

Total Pulp Metallics	
Total pulp metallic analysis is when the whole sample is crushed to –10 mesh and pulverized to 95% –150 mesh. The total sample is then weighed and screened 150 mesh. The +150 mesh fraction is fire assayed for Au, and a 30g subsample of the –150 mesh fraction is fire assayed for Au. A calculated weighted average of total Au in the sample is reported as well.	
Au (Total Pulp Metallics) Analysis only	\$37.80
2 –30g minus fractions	\$57.70
2 –40g minus fractions	\$61.05



Geochemistry Trace (Multi Acid Digestion)

Many base metals may be preferred to be analysed by single element geochemistry. For this reason we use a partial four acid digestion, with atomic absorption finish.

Sub-sample splits of 0.5g are digested in four acids and each element analysed individually. Some samples will have limited dissolution by this method for some elements.

Element	Detection Limit	
Copper (Cu)	1 -10000ppm	
Lead (Pb)	1 -10000ppm	
Silver (Ag)	0.2 -6.0ppm	
Zinc (Zn)	1 -10000ppm	
\$11.00 for first element, plus \$5.25 for each additional element.		

Geochemistry Water/Solutions (AA Finish)

Element	Lower Detection Limit	
pH	N/A	
Copper (Cu)	0.01 ppm	
Iron (Fe)	0.01 ppm	
Lead (Pb)	0.01 ppm	
Zinc (Zn)	0.01 ppm	
\$16.70 for first element, plus \$5.70 for each additional element.		

Ore Grade Assay (Multi-Acid Digestion)

Some samples have elemental concentrations which exceed the limits of the trace geochemical packages.

Ore grade analysis provides a higher dissolution for samples with a higher metal concentration. This is a more precise method than the trace geochemistry. Before analysis by atomic absorption, 0.200g to 2.00g of sample is digested with three acids. Suitable for concentrations as low as 0.01% up to 50-60% metal content.

Custom bundles may be available on bulk orders. Call for details.

Element	Lower Detection Limit	Price
Cobalt (Co)	0.001%	\$14.80
Copper (Cu)	0.01%	\$14.80
Lead (Pb)	0.01%	\$14.80
Nickel (Ni)	0.01%	\$14.80
Zinc (Zn)	0.01%	\$14.80
Iron (Fe)	0.01%	\$14.80
*Silver (Ag)	0.1g/t	\$17.10
*Antimony (Sb)	0.01%	\$17.10
\$14.80 for first element, plus \$6.25 for each additional element. *except Silver (Ag), Antimony (Sb)		



Lithium

Our lithium package provides the analysis of four elements in one scan. The 1.00g subsample is digested by four acids and analyzed by ICP-OES.

Element	Detection Limit	Price
Lithium (Li)	<5 -100000ppm	
Niobium (Nb)	<5 -1000ppm	
Tin (Sn)	<10-1000ppm	
Tantalum (Ta)	<5-1000ppm	
		\$23.90



ICP (Inductively Coupled Plasma)

ICP analysis provides an economically cost effective analysis for many elements in one scan. 200mg subsample is totally dissolved in four acids and analysed by ICP-OES.

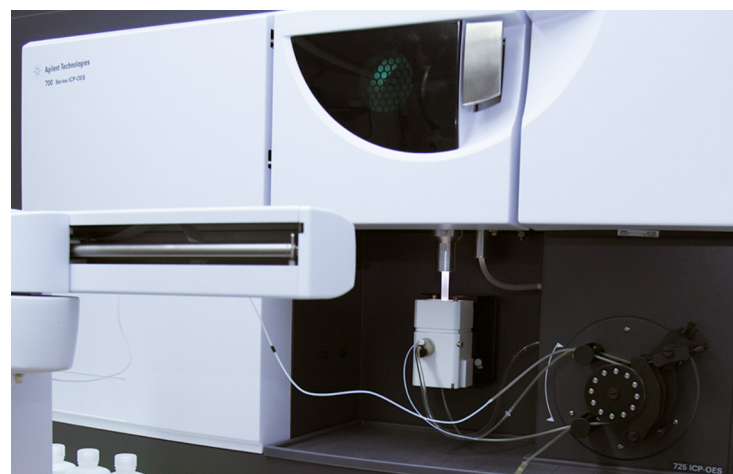
ICP-34 Multi-Acid

Element	Detection Limit	Element	Detection Limit
Ag (Silver)	0.2 –6.0ppm	Mn (Manganese)	1 –20,000ppm
Al* (Aluminum)	0.01 –20.00%	Mo (Molybdenum)	1 –1,000ppm
As* (Arsenic)	5 –1,000ppm	Na* (Sodium)	0.01 –10.00%
Ba (Barium)	5 –10,000ppm	Ni (Nickel)	1 –1100ppm
Be (Beryllium)	0.5 –1,000ppm	P (Phosphorus)	0.01 –10.00%
Bi (Bismuth)	2 –1,000ppm	Pb (Lead)	2 –2,200ppm
Ca* (Calcium)	0.01 –20.00%	S (Sulfur)	0.01 –20.00%
Cd (Cadmium)	0.5 –1,000ppm	Sb (Antimony)	3 –440ppm
Ce (Cerium)	2 –5,000ppm	Se (Selenium)	10 –1,000ppm
Co (Cobalt)	2 –550 ppm	Sn* (Tin)	10 –1,000ppm
Cr* (Chromium)	5 –10,000ppm	Sr (Strontium)	1 –10,000ppm
Cu (Copper)	5 –10,000ppm	Ti (Titanium)	0.01 –10.00%
Fe (Iron)	0.01 –10.00%	U (Uranium)	2 –1,000ppm
In (Indium)	2 –1000ppm	V (Vanadium)	1 –1,000ppm
K* (Potassium)	0.01 –10.00%	W* (Tungsten)	10 –1,000ppm
La* (Lanthanum)	1 –5,000ppm	Zn (Zinc)	5 –2,200ppm
Mg* (Magnesium)	0.01 –10.00%	Zr (Zirconium)	1 –5,000ppm
		Price	\$19.25

(The solubility of elements marked with a * may be limited)

Au +ICP Package

Au (Fire assay) is commonly combined with our ICP packages to provide a more cost effective package.



Au (Fire assay) @ 30g +ICP-34	\$37.45
Au/Pt/Pd (30g) +ICP-34	\$43.95

Data Services/Payment/Storage

Data Services

Clients with Internet access may receive their data in digital format via email (please attach email address on requisition). Data may be faxed at your request (please attach fax number on requisition). All data is in Excel spreadsheet and PDF format.

Priority service is available at 1.5X list price. This priority service will speed up analysis ahead of all other non-priority work. Please call for more information and current turnaround. Normal turnaround will depend on sample volume currently in the lab and will vary. Please call for current turnaround time. Volume discounts are available at our discretion.

Payment

Payment can be made by cash, cheque or money order. Direct payment can be made through our bank. Please contact us for account information. Payment is due upon receipt of invoice. All overdue accounts (net 30 days) are subject to an interest charge of 1.5% per month. Eastern Analytical Ltd. reserves the right to withhold results and/or processing of samples on all overdue accounts until payment is made in full. New clients must send payment with samples, otherwise data will not be released until payment is received in full. 15% HST applies to all services. Prices are subject to change without notice. To establish a credit account, please call or email for a credit application.

Storage

Coarse rejects and pulps are kept free for 3 months. Longer term storage is available upon request for a fee. We encourage all samples to be picked up or returned to client after analysis is complete (charges will apply at cost). Disposal fees of pulps and rejects may apply, depending on volume.

Eastern Analytical Ltd.

403 Little Bay Road PO Box 187
Springdale, NL A0J 1T0
Canada

Email: info@easternanalytical.ca
Website: www.easternanalytical.ca
Phone: 709-673-3909
Fax: 709-673-3408



Sample Submittal Form

INTERNAL USE ONLY	
Job Number	_____
Date Received	_____

Results To:		Invoice To:		Same as results <input type="checkbox"/> <input checked="" type="checkbox"/>	
Company		Company			
Address		Address			
E-mail		E-mail			
Phone	Fax	Phone	Fax		

Additional Copies To:		Submitted By:	
Name	E-mail	Project #:	
		Date:	

#Samples	Type of Sample	Sample Sequence (from-to)	Element or Package	Priority Service (1.5xPrice)

Special Instructions

Storage & Disposal:		Return Address:		Same as results <input type="checkbox"/> <input checked="" type="checkbox"/>	
Rejects:	Type of Sample:	Company:			
		Address:			
		Return after analysis @cost			
		Return after 3 Months @cost			
		Discard after 3 Months @cost			
		Paid Storage after 3Months			
		Pickup by Sender			

Note: Rejects and pulps will be disposed after 3 months unless requested.
Charges will apply for disposal and storage of both pulps and rejects.

<p>Authorization:</p> <p>Assigned requisition, becomes a binding contract based on our current prices, for the above services.</p>	
<p>_____ Signature of Clients Representative</p>	<p>_____ Date</p>



EASTERN

Analytical



P.O. Box 187
403 Little Bay Road
Springdale, NL
A0J 1T0
Canada

PH: (709) 673-3909
Fax: (709) 673-3408
www.easternanalytical.ca
info@easternanalytical.ca

***ISO 17025**
Accredited Laboratory
www.easternanalytical.ca